

Printer Driver Instruction Manual

~For Windows 2000, XP~

DS40/DS80

●Concerning Copyright

The copyrights for the DS40/DS80 Printer Driver Instruction Manual, the DS40/DS80 Printer Driver that is included with the printer, and the contents of the CD are the property of the Dai Nippon Printing Co., Ltd. Reproduction of any or all of the contents of the DS40/DS80 Printer Driver Instruction Manual, the DS40/DS80 Printer Driver that is included with the printer, and the contents of the CD without consent of the company is a violation of copyright law.

However, for non-commercial personal use purposes, you may make 1 copy of the Printer Driver Instruction Manual solely for back-up-purposes.

Microsoft and Windows are registered trademarks of Microsoft Corporation valid in the USA and other countries.
LEADTOOLS Copyright (C) 2007 LEAD Technologies, Inc.

●Notes for Safety Purposes

Please read the Instruction Manual well before using the printer, and follow all instructions carefully. Further, the contents of the safety warnings and comments in the Instruction Manual concerning use met safety standards at the time of publishing.

●Concerning modification

The DS40/DS80 printer and the DS40/DS80 Printer Driver and CD contents were planned, developed, and manufactured by Dai Nippon Printing Co., Ltd.

For safety purposes, any modification is prohibited.

Contents

<i>Chapter 1 Install</i>	<i>1</i>
1.1 Printer and Host computer Connection	1
1.2 Found New Hardware Wizard	1
1.3 Install from Add Printer Wizard	5
<i>Chapter 2 Properties</i>	<i>11</i>
2.1 Opening Printer Properties	11
2.2 Explanation of Print Setting Functions	12
2.2.1 Layout	12
2.2.2 Advanced Options	13
2.2.3 Paper/Quality	18
2.2.4 Option	18
2.2.5 Color Adjustment	19
2.3 Default Values for Various Settings	20
2.4 Color Management	20
2.5 Print Area	21
<i>Chapter 3 Updating the Driver</i>	<i>22</i>
<i>Chapter 4 Driver Removal</i>	<i>24</i>

Chapter 1 Install

1.1 Printer and Host computer Connection

Power ON the DS40/DS80 and connect the DS40/DS80 printer and the host by USB cable.

* Please refer to the manual for the DS40/DS80 printer for connection if needed.

After that, if [Found New Hardware Wizard] is initiated, please install using the procedure in [1.2 Found New Hardware Wizard]. If [Found New Hardware Wizard] is not initiated, please install in accordance with [1.3 Install from Add Printer Wizard].

The following describes the driver installation for the “DS40”, but it is the same for the “DS80”. Please just substitute “DS80” for “DS40” when following the directions.

1.2 Found New Hardware Wizard

After confirming [Install from a list or specific location [Advanced]] is selected, click [Next].

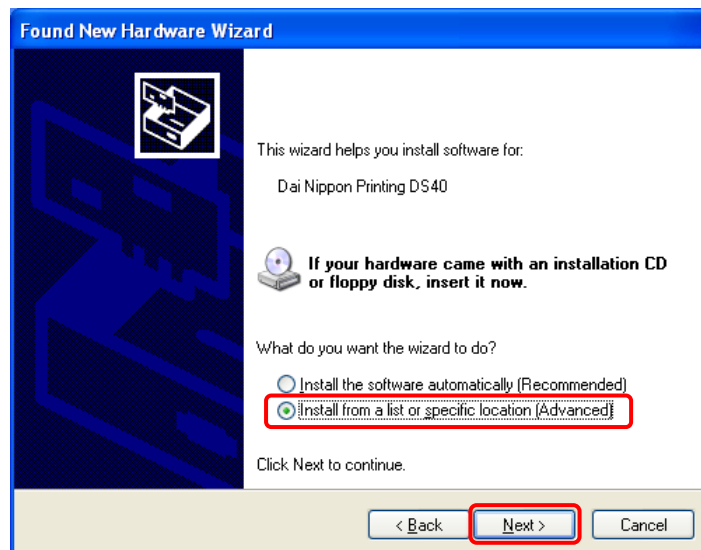


Fig 1.1 Found New Hardware Wizard

Note) When using Windows XP SP2 or later, if the following screen appears in “Found New Hardware Wizard”, select “No, not this time”, and click the “Next” button.



Select [Search for the best driver in these locations], and confirm that [Include this location in the search] is selected.

Specify the location of the installation disk using the [Browse] button, and click [Next].

*The location is different by the OS. (XP or 2K)

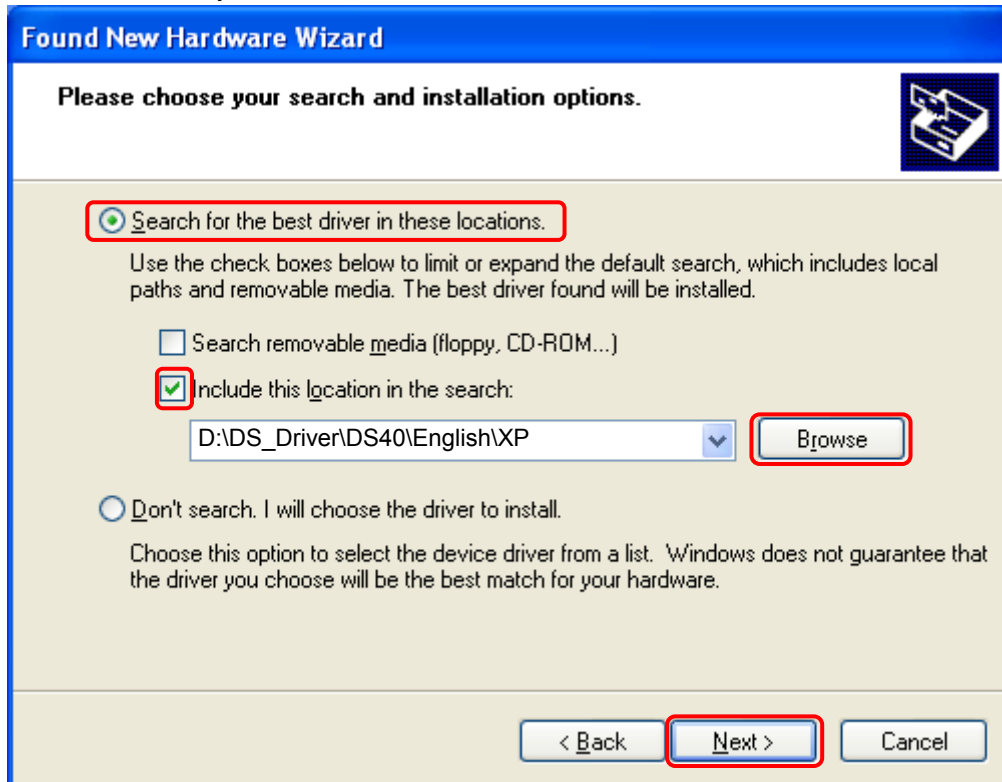


Fig 1.2 Search and Install Option

After searching the driver file, software installation is initiated. It takes some time for the software installation.

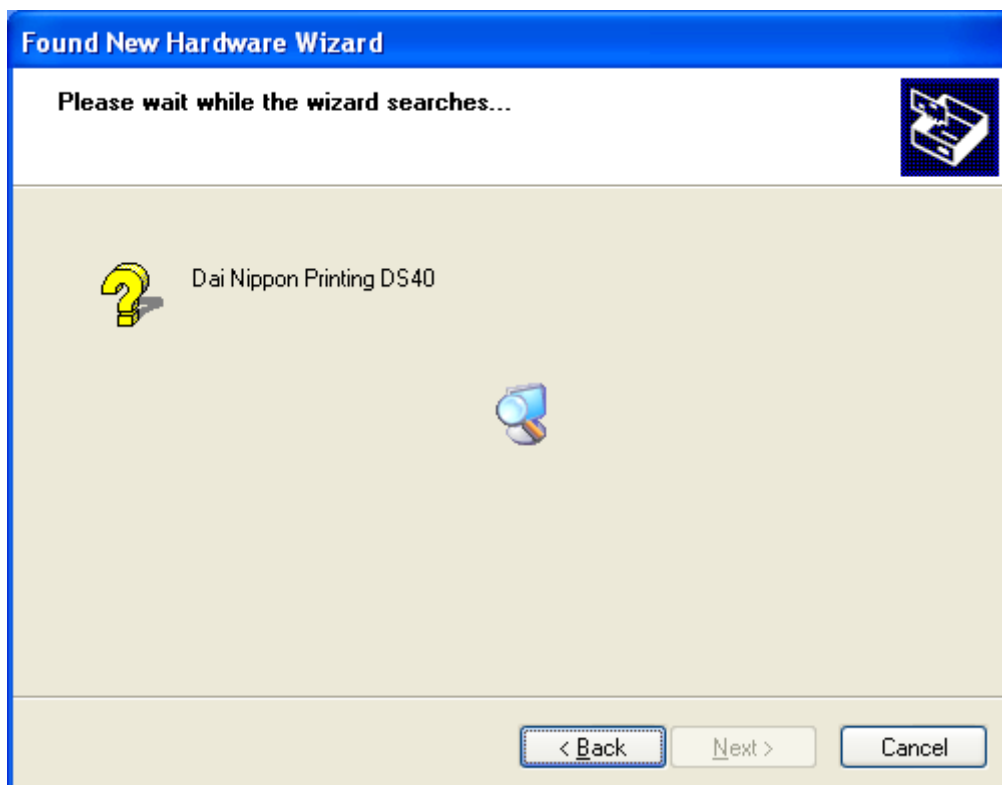


Fig 1.3 Software Installation

If the following window appears during upgrade installation, check the “Version” section, select the newest version, and click the “Next” button.

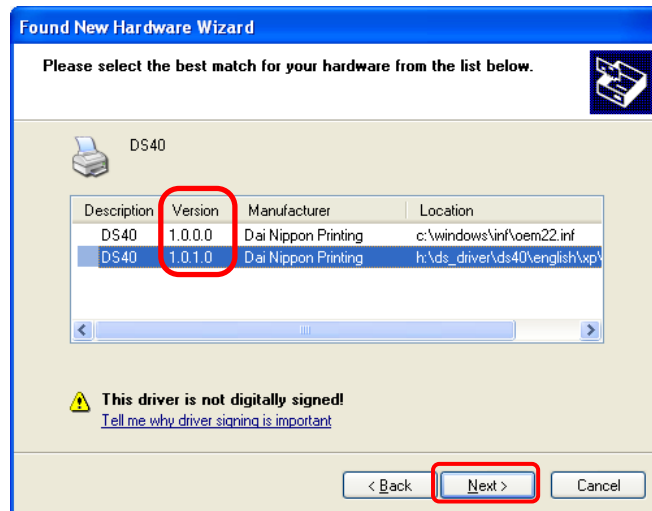


Fig 1.4 Select Software

During software installation, the following message will be displayed. Please click [Continue Anyway] to continue.



Fig 1.5 Hardware Installation

If [Search removable media (floppy, CD-ROM)] has been selected in Figure 1.2, the following message will be displayed. CD-ROM is inserted, and click [OK].

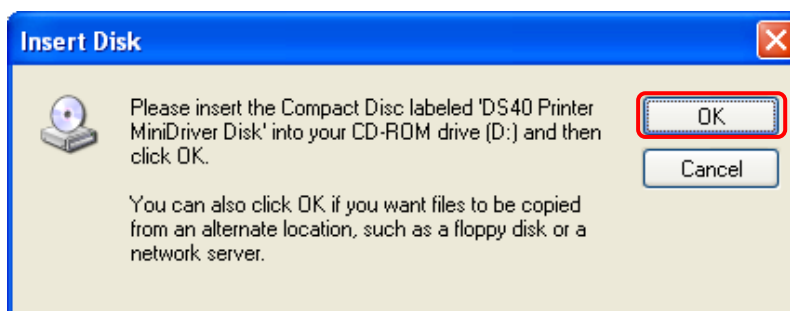


Fig 1.6 Insert Disk

If the following window appears when clicked [OK] in Figure 1.6.
Specify the location of the installation disk using the [Browse] button, and click [OK].

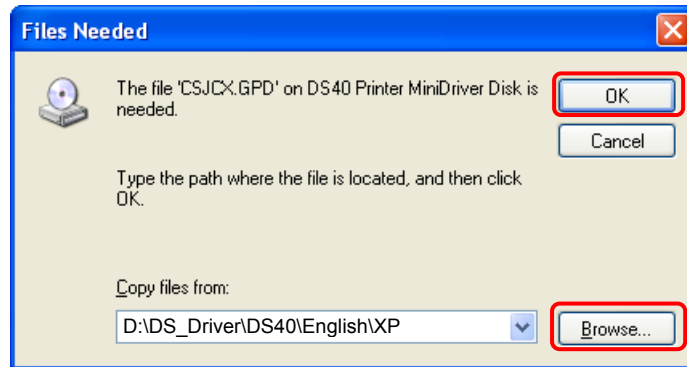


Fig 1.7 Files Needed

Click [Finish] to finish the wizard.

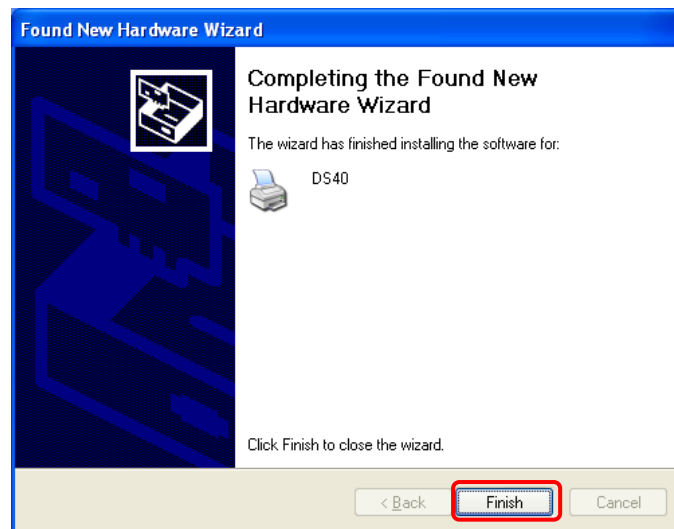


Fig 1.8 Quit from Found New Hardware Wizard

Click [start] - [Printer and Faxes] and confirm that [DS40] is shown.

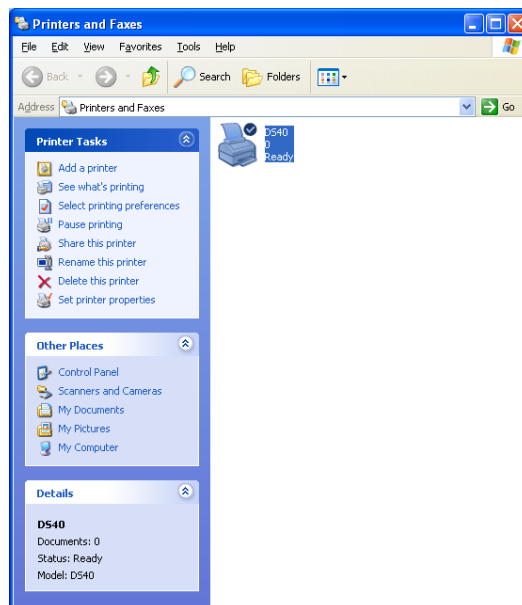


Fig 1.9 Printers and Faxes

After installation of the printer-driver is complete, be sure to reboot the computer.

1.3 Install from Add Printer Wizard

Click [start] - [Printers and Faxes].

(Depending on the host computer, [Printers and Faxes] may not be indicated. In that case, click [start] - [Control Panel] - [Printer and Other Hardware] - [Printers and Faxes])

Click [Add a printer].

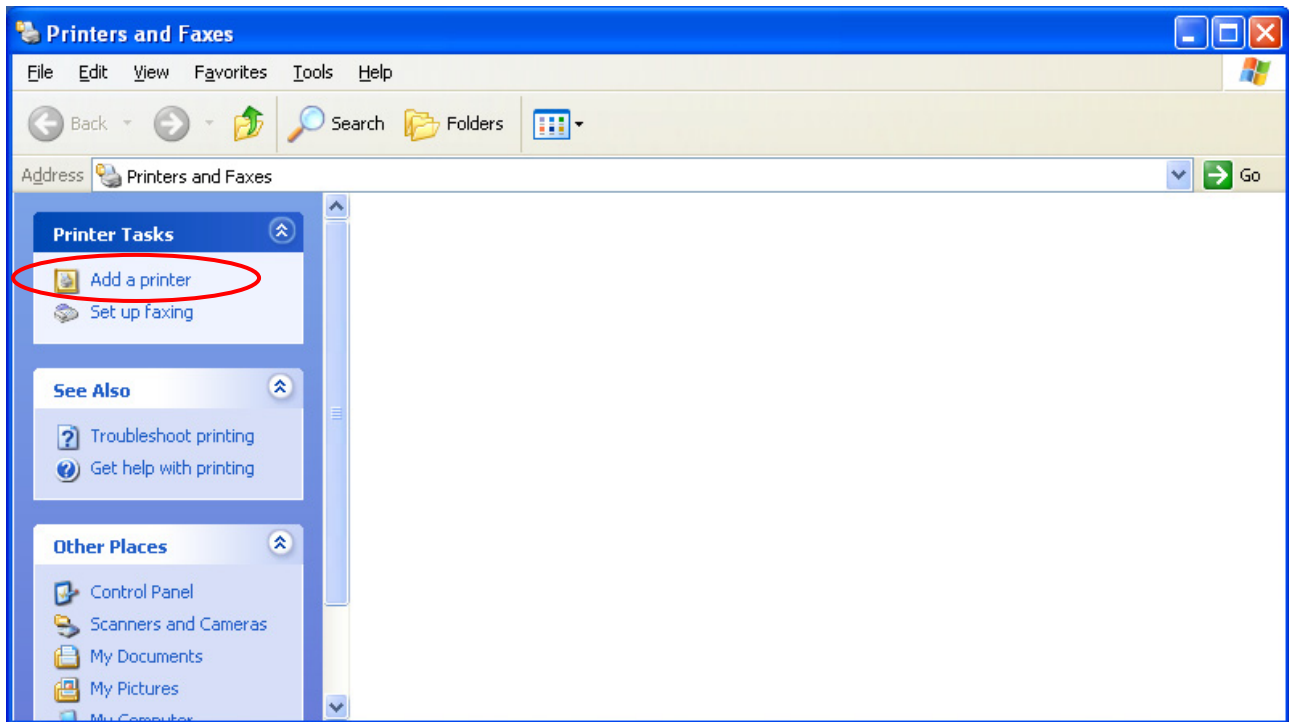


Fig 1.10 Printers and Faxes

After [Add Printer Wizard] window is shown, click [Next].

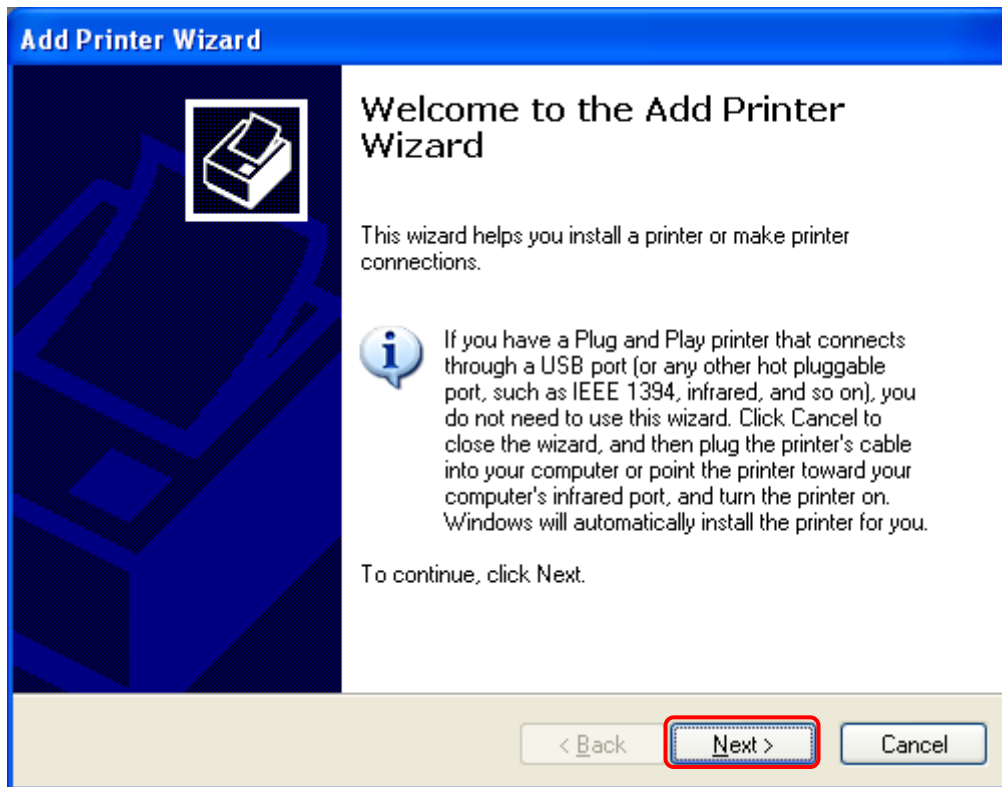


Fig 1.11 Start of Add Printer Wizard

In the [Local or Network Printer] window, select [Local printer], and deselect [Automatically detect and install my Plug and Play printer], then click [Next].

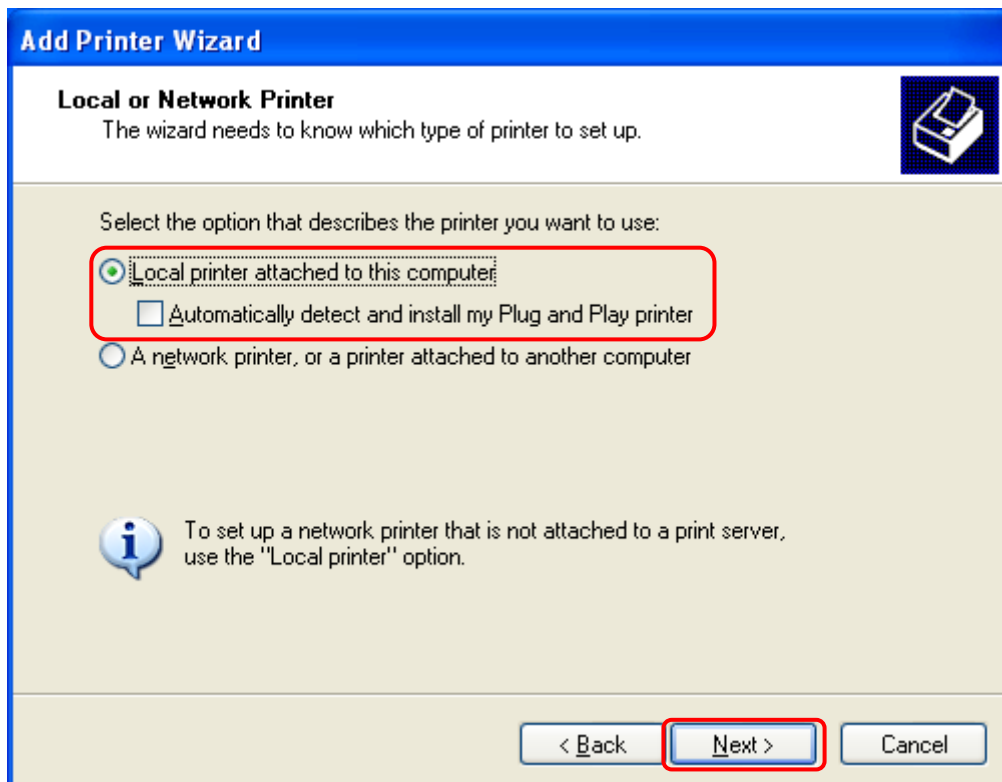


Fig 1.12 Local or Network Printer

In the [Select a Printer Port] window, select [Use the following port] and assign USB port ([USB001] so on) from the dropdown list, then click [Next].

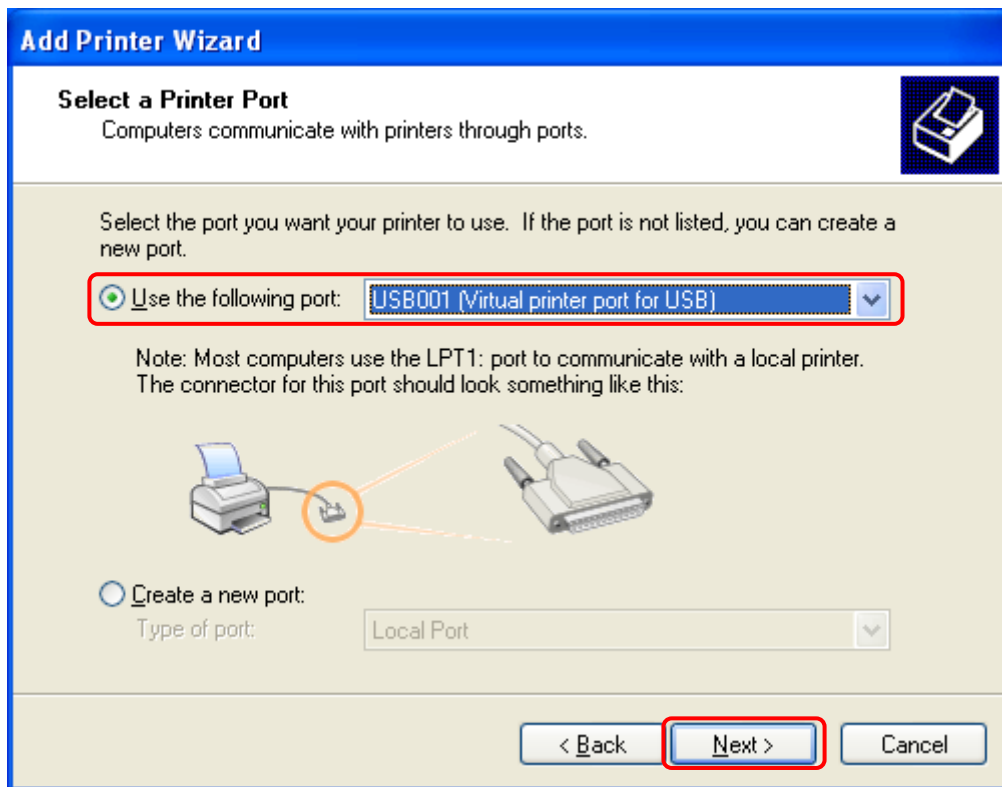


Fig 1.13 Printer port assign

After [Install Printer Software] is shown, click [Have Disk].

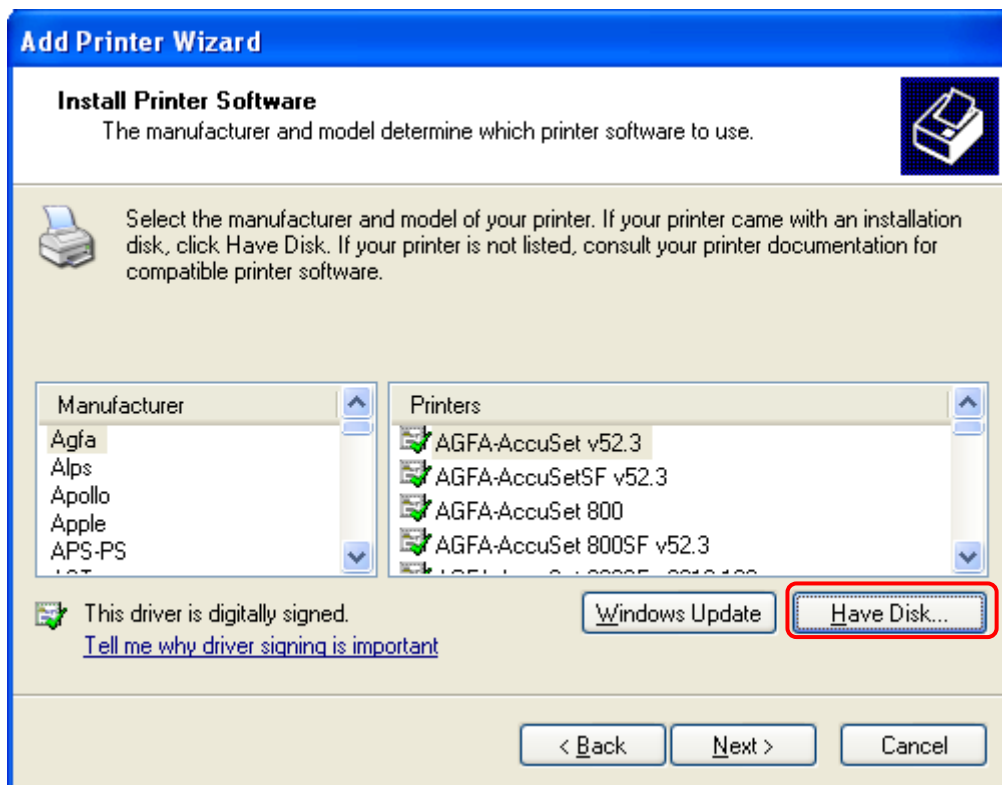


Fig 1.14 Printer software installation

In the [Install From Disk] window, select the location of the installation disk using [Browse].
*The location is different by the OS. (XP or 2K)

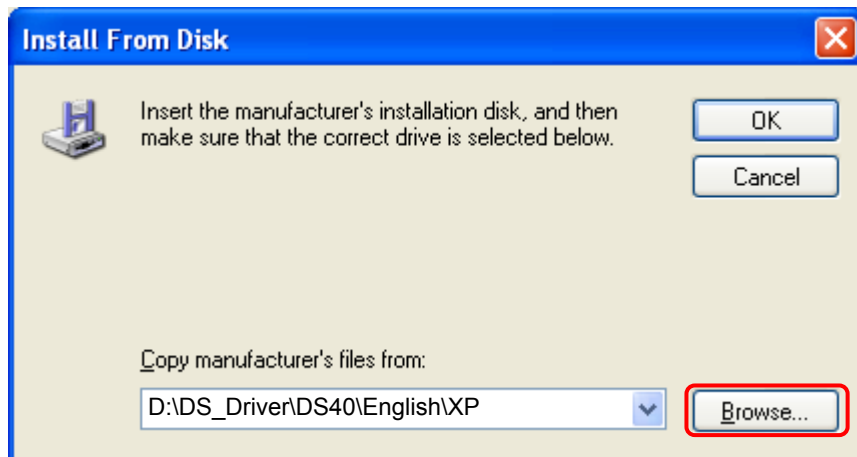


Fig 1.15 Install from disk

After confirming that [DS40] is shown, click [Next].

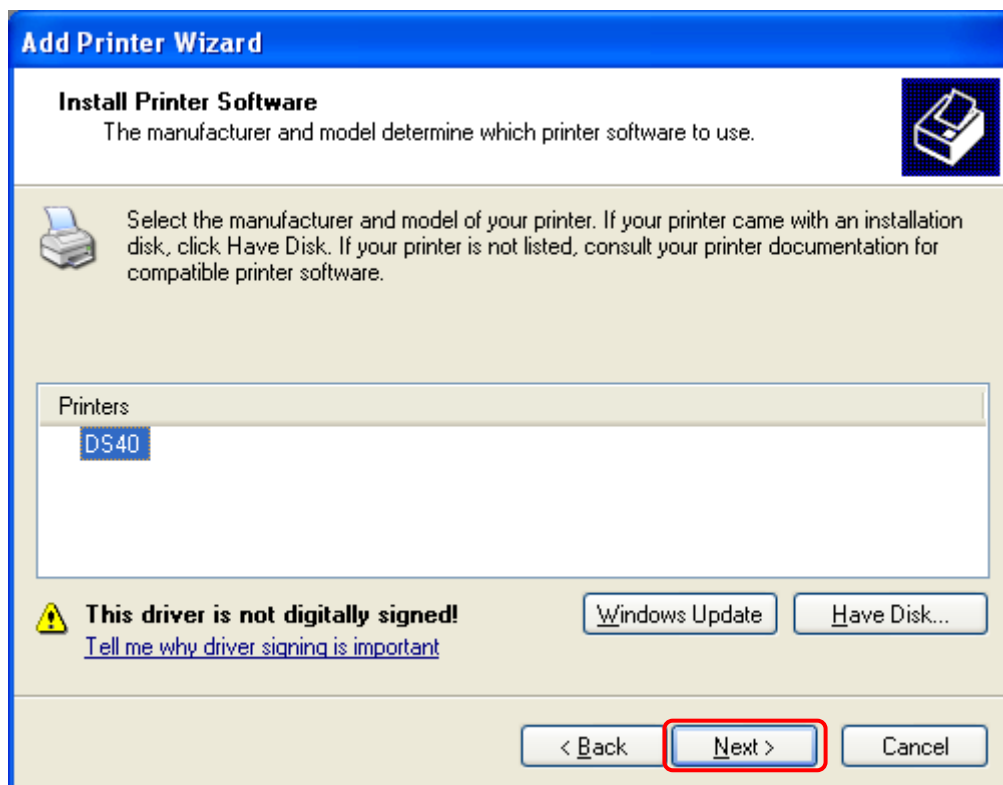


Fig 1.16 Printer software installation

In the [Name Your Printer] window, assign a name to the printer and click [Next].

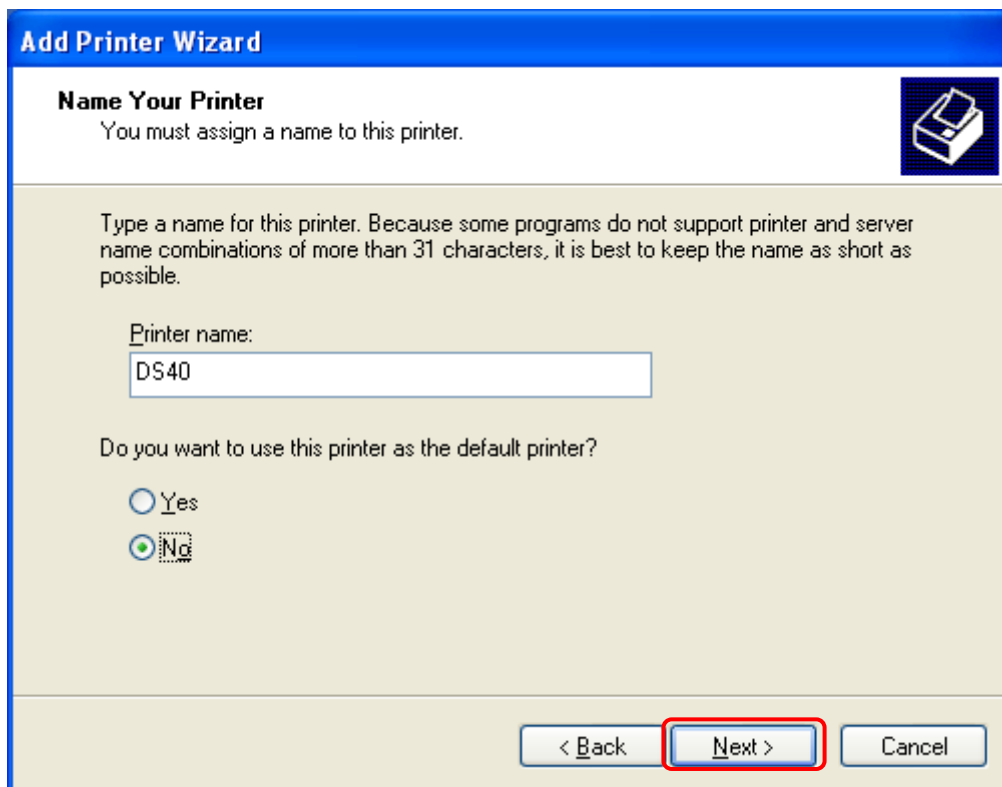


Fig 1.17 Assigning a name to the printer

In the [Print Test Page] window, select [No] and click [Next].

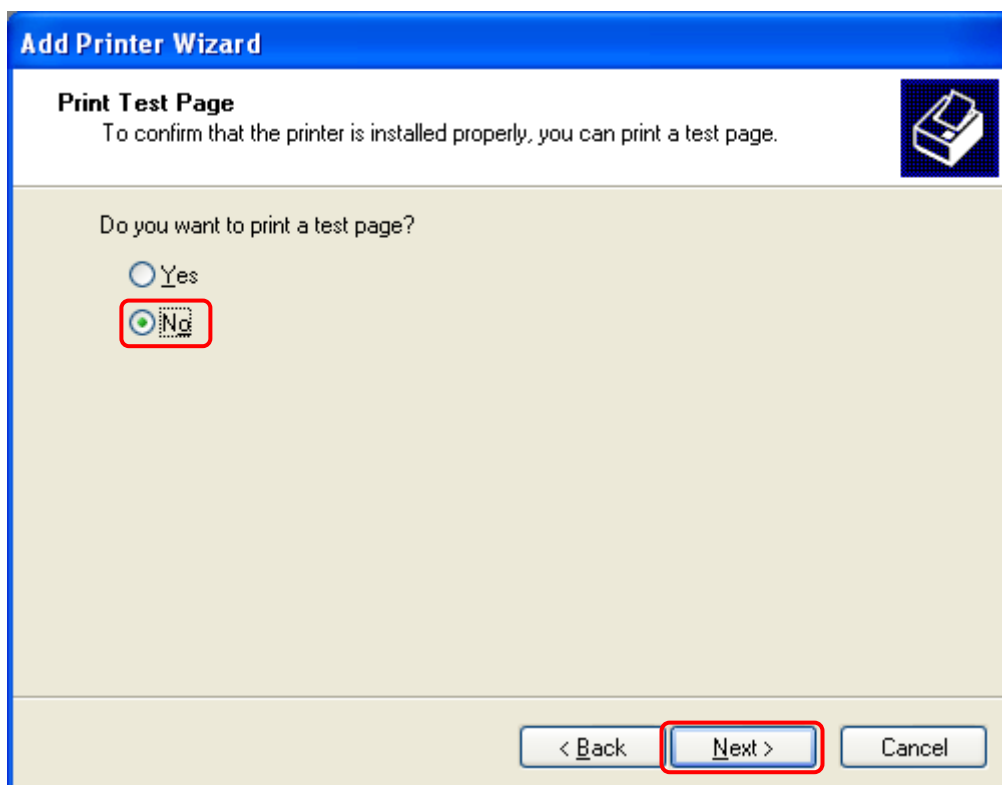


Fig 1.18 Print test page

In the [Completing the Add Printer Wizard] window, click [Finish].

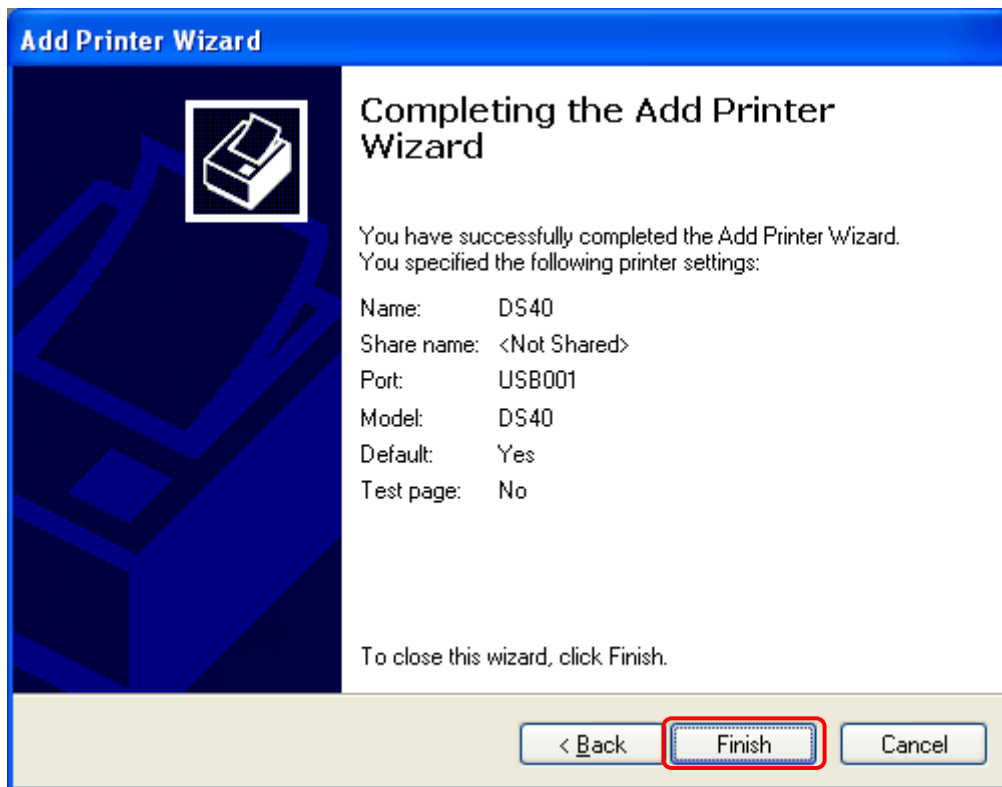


Fig 1.19 Completing the Add Printer Wizard

When installing the software, the following message may be displayed. Click [Continue Anyway] to continue.



Fig 1.20 Hardware installation

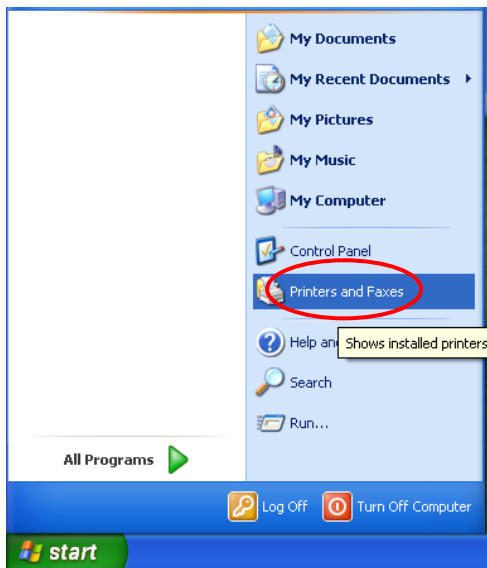
After installation of the printer-driver is complete, be sure to reboot the computer.

Chapter 2 Properties

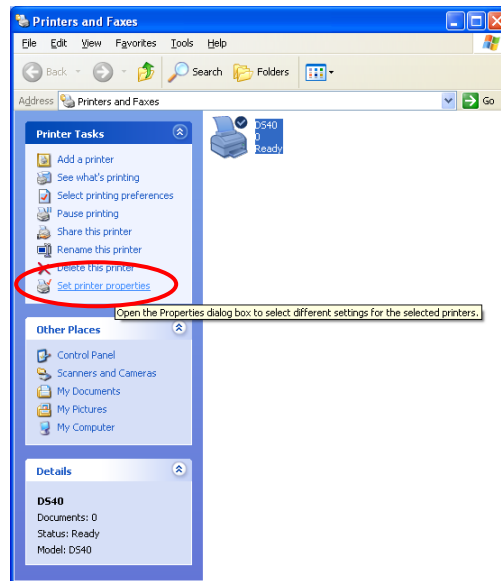
Various printer settings can be made using the DS40/DS80 Driver properties. As a rule, the printer settings should not be altered. Use the default settings present at installation. Alter paper-size settings at the Application side. Before operation, be sure to have a good understanding of the contents.

2.1 Opening Printer Properties

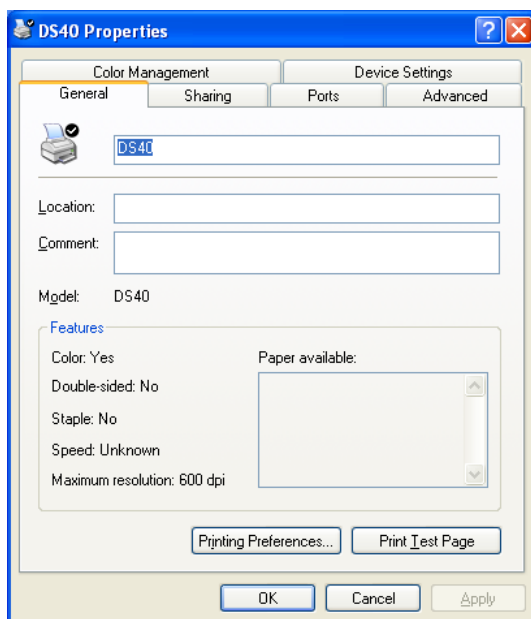
1. Start in order using START →
All Programs → Printers and Faxes



2. Select the DS40 printer →
Open Set printer properties



3. The DS40 Properties window will appear.



2.2 Explanation of Print Setting Functions

2.1 From the Properties window, by selecting Printing Preferences you can make various print settings.

2.2.1 Layout

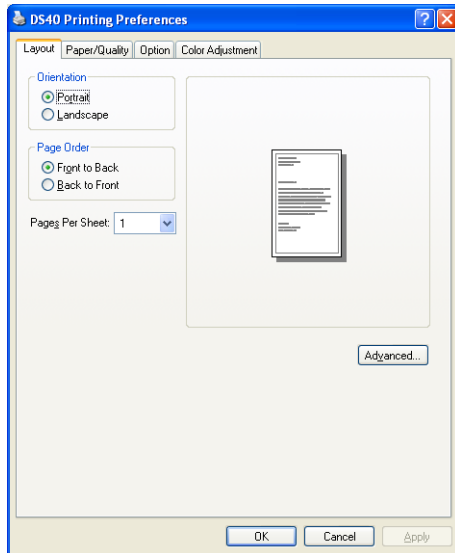


Fig 2.2.1 Layout tab

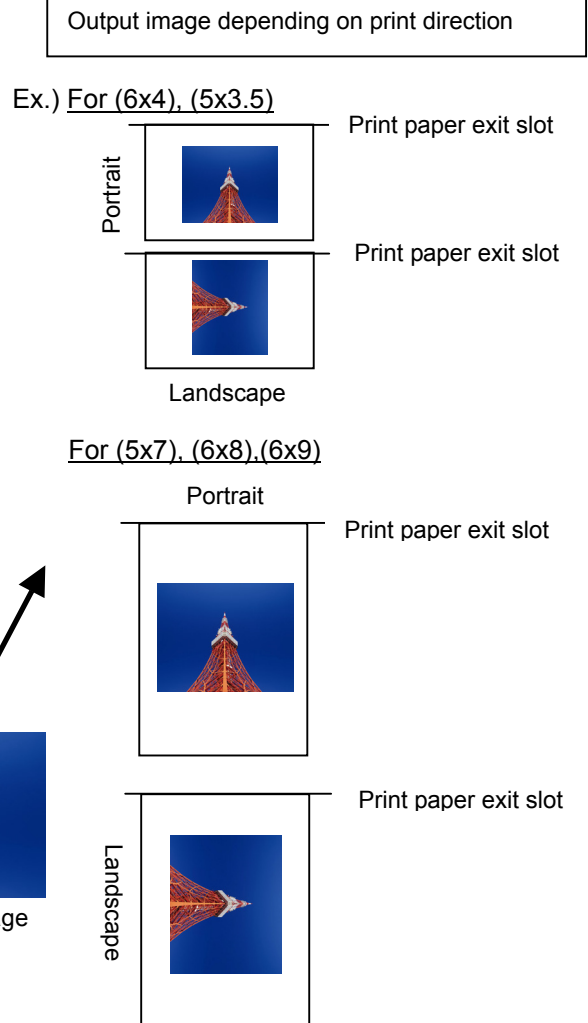
Orientation

Assign print orientation as vertical or horizontal.

Output images of the original image without rotation are shown at the right.



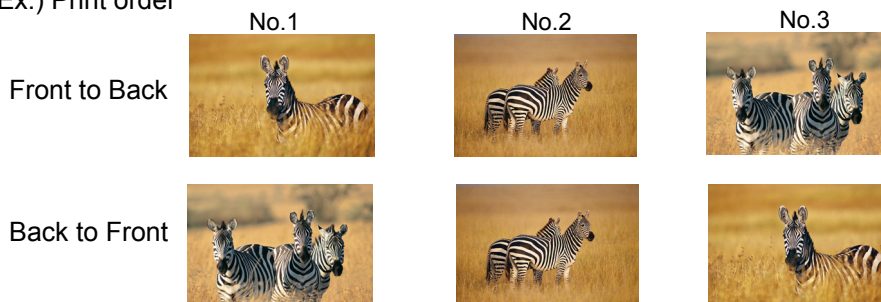
Original image orientation



Page Order

When printing multiple images in the application, you can set the order.

Ex.) Print order



Pages Per Sheet

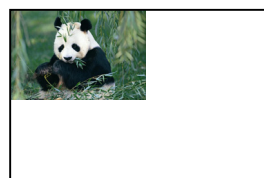
Prints the designated fractional size.

Ex.) Fractional size

1 (Whole)



4 (Quarter-size)



9 (One-ninth size)



2.2.2 Advanced Options

By selecting [Advanced] in the Layout window, various settings can be made using Advanced Options.

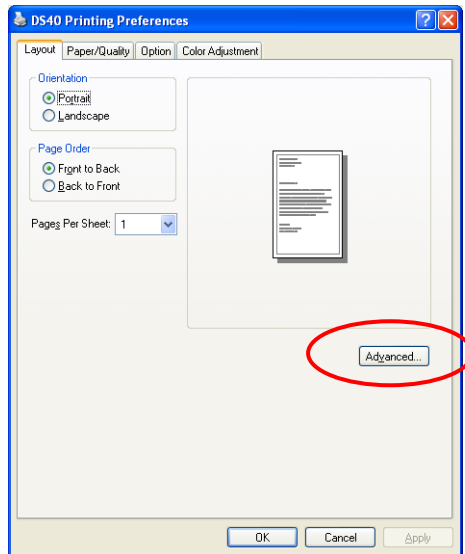


Fig 2.2.2.1 Advanced Settings

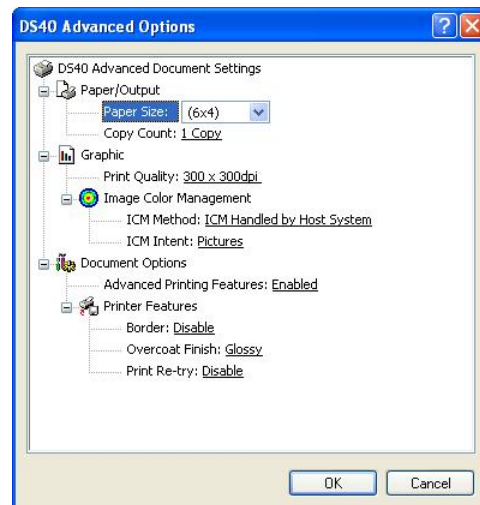


Fig 2.2.2.2 Advanced Options tab

Paper Size

You can designate the paper size. Please match the paper size to the media size with which the printer is equipped

Copy Count

You can designate the number of times an image will be printed.

Print Quality

You can designate the print quality. Please match the print quality to the printer settings.

ICM Method

ICM intent	Function
ICM Disabled	2.2.4 Synchronous with "Color Management: None" in paper option.
ICM Handled by Host System	2.2.4 Synchronous with "Color Management: ICM" in paper option. Performs color management with the driver.
ICM Handled by Printer	This is the same as setting "ICM Handled by Host System".

ICM Intent

This designates the rendering method when using ICM. Always have the ICC profile for the DS40 set to "Picture". Please do not use it at other settings.

Advanced Printing Features

Always have it set to "Enabled". Please do not use it at other settings.

Border

Synchronous with the border option in the paper option.

Overcoat Finish (Depending on the version being used, "Glossy" may be the only option)
The overcoat finish for the printed surface can be selected from the following two types.

Overcoat Finish	Function
Glossy	This finishes the print with a glossy surface.
Matte	This finishes the print with a matte (non-glossy) surface.

- * Change the printer of the version corresponding to Overcoat Finish and a non-corresponded version, and when you use it by connecting it to the same USB port, when you change printers, reboot the computer.

Print Re-try (Depending on the version being used, "Disable" may be the only option)
This sets up whether print data in a printer buffer when the error of a printer occurs is printed after error recovery, or it does not print.

Print Re-try	Function
Disable	Printing data in a printer buffer is cleared in the case of a printer error. After an error recovery, the cleared image data must be re-sent. When using an application that has an error recovery function, select this option.
Enable	Printing data in a printer buffer is held in the case of a printer error. After an error recovery, the print process resumes with the saved data. However, if the power is turned OFF, the data will not be saved.

- * Change the printer of the version corresponding to Print Re-try and a non-corresponded version, and when you use it by connecting it to the same USB port, when you change printers, reboot the computer.

According to the contents of a printer error, the power supply of a printer needs to be re-switched on for error recovery. In this case, it is not dependent on a setup of Print Re-try, and printing data in a printer buffer is cleared.

Operation by Print Re-try setup in each error is shown below.

Contents of an error	Print Re-try setup is "Disable"	Print Re-try setup is "Enable"
Paper End	Please resend picture data not printed after error recovery.	Printing processing is resumed from data currently held in a printer buffer after error recovery. When paper initialization operation is performed, it is printed after paper initialization operation.
Ribbon End		
Cover Open		
Paper Jam (*1)		
Ribbon Error (*1)		
Paper Definition Error		
Scrap Box Error		
Data Error	For error recovery, the power supply of a printer once needs to be turned OFF. Therefore, print data in a printer buffer is cleared by power-supply OFF of a printer regardless of a setup of the Print Re-try function.	For error recovery, the power supply of a printer once needs to be turned OFF. Therefore, print data in a printer buffer is cleared by printer power-supply OFF even if the Print Re-try function is set to "Enable".
Head Voltage Error		
Head Position Error		
Power Supply Fan Stop		
Cutter Error		
Abnormal Head Temp.		
Abnormal Media Temp.		
Ribbon Tension Error	Please resend picture data not printed after printer re-starting.	Please resend picture data not printed after printer re-starting.
RFID Module Error		
Abnormal motor Temp.		
System Error		

- *1: After an error stop, a paper or a ribbon should perform removal work of an error factor according to a printer user's manual.

<Multiple layout>

When the DS40 is using 6x9(A5W), 6x8 or DS80 is using 8x12, 8x10 size media, 2 or 3 image layout is possible. With the printer driver paper setting, multi-image layout is made possible, and the image sizes are as follows.

Layout designation

	Driver paper setting (layout)	Image size (mm)	Using media
DS40	(6x4) x 2	(156.1x105.0) x 2	6x9 (A5W), 6x8
DS80	(6x4) x 2	(156.1x105.0) x 2	8x12, 8x10
	(8x4) x 2	(207.3x104.6) x 2	8x12, 8x10
	(8x5) x 2	(207.3x130.0) x 2	8x12, 8x10
	(8x6) x 2	(207.3x155.4) x 2	8x12
	(8x5) _ (8x4)	(207.3x130.0) + (207.3x104.6)	8x12, 8x10
	(8x6) _ (8x4)	(207.3x155.4) + (207.3x104.6)	8x12, 8x10
	(8x6) _ (8x5)	(207.3x155.4) + (207.3x130.0)	8x12
	(8x8) _ (8x4)	(207.3x206.2) + (207.3x104.6)	8x12
	(8x4) x 3	(207.3x104.6) x 3	8x12
Image layout median size		2.54	

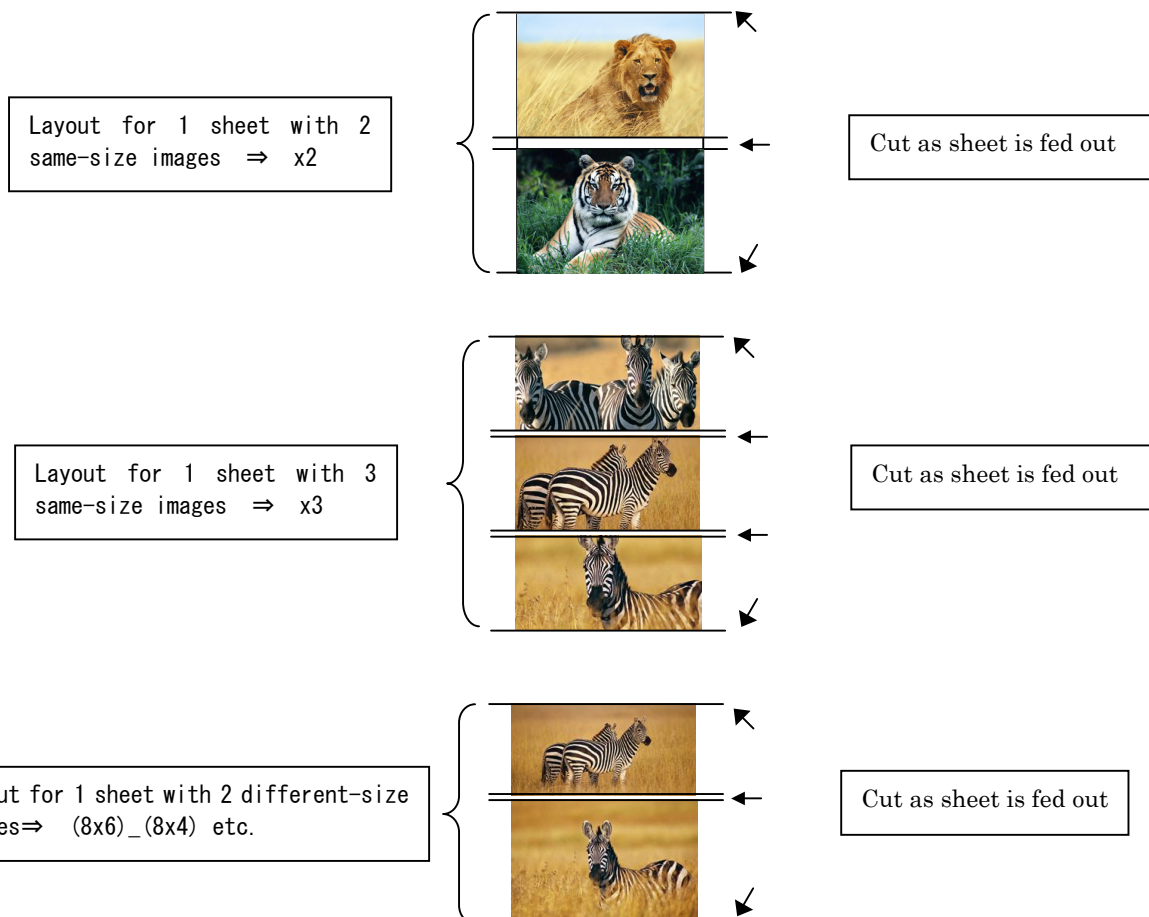
Multiple layout is possible under the following conditions.

- 1.The printer is using 6x9, 6x8 or 8x12, 8x10 size media.
- 2.The printer driver paper size is set to one of the above sizes.
- 3.Multiple images are sent from the application.

Note) Because the multi-image layout occurs on a per job basis, this works when there are multiple images for 1 job. If you want to print the same image, be sure to send the image data for each copy to be printed. The printer prints 2 or 3 images in one operation, and the paper is cut as it is fed out.

<Multi-image layout patterns>

The following combinations are possible for the multi-image layout patterns.



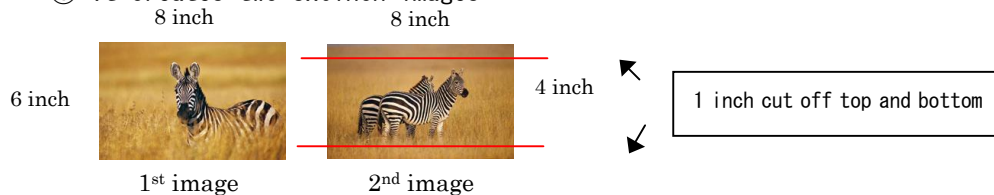
Cautions for printing 2 different-size images on one sheet

When printing 2 different-size images on 1 sheet, 1 inch will be cut off the top and bottom of the 2nd image when the image is being generated. When creating the original image, be aware of the following points.

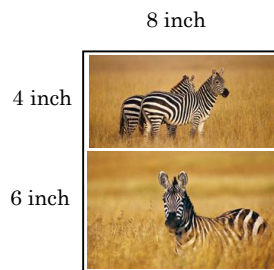
Ex.) When the layout is set for (8x6)_(8x4)

The driver creates the layout image in the order of ①, ②.

① It creates two 8x6inch images

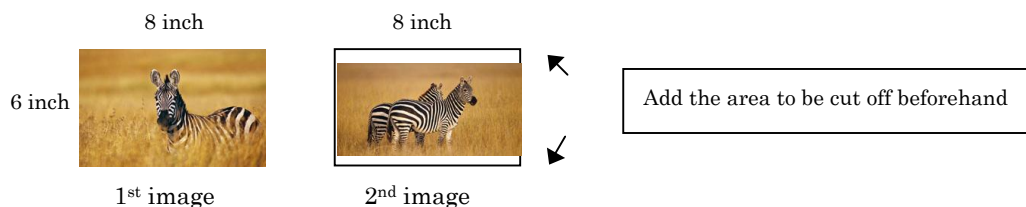


② The driver then lays out the 2 different-size images from ① as one (8x10) image and outputs it to the printer.



Ex.) Example of creating the original image.

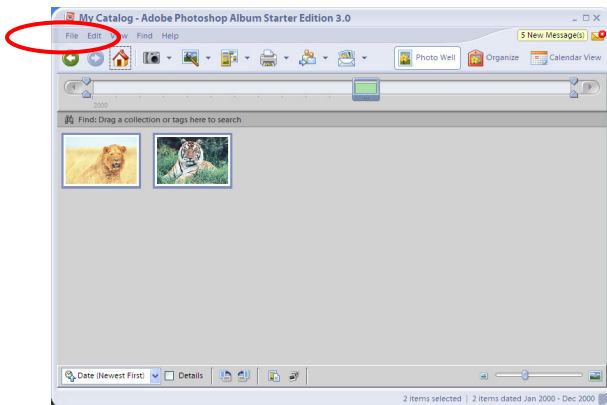
When outputting the original image to the driver, the 1st and 2nd images are created as the same size, so factor in the space that will be cut off from the 2nd image.



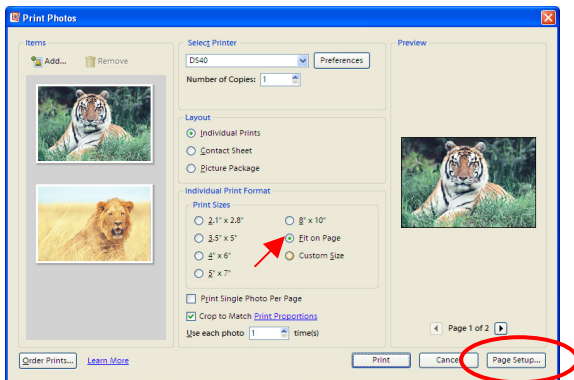
<Example of Application Use>

This is an example using Adobe Systems Photoshop Album.

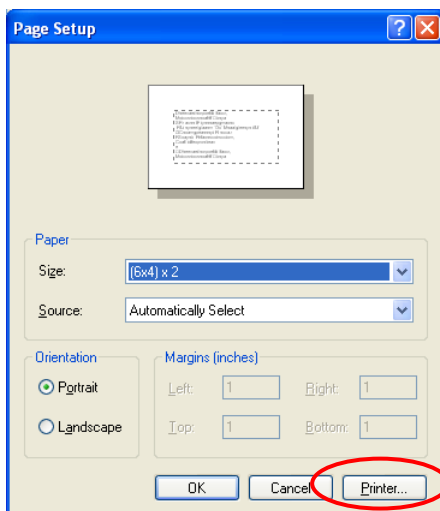
Step 1. Using File⇒Get Photo, select 2 or more images, and go to File⇒Print.



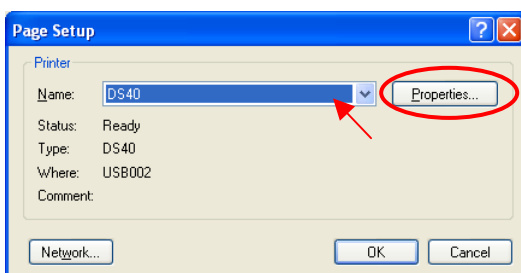
Step 2. In "Print Sizes", select "Fit to Page". Then click "Page Setup".



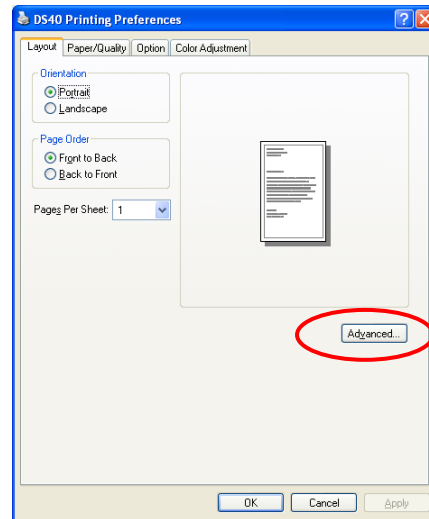
Step 3. Click on "Printer".



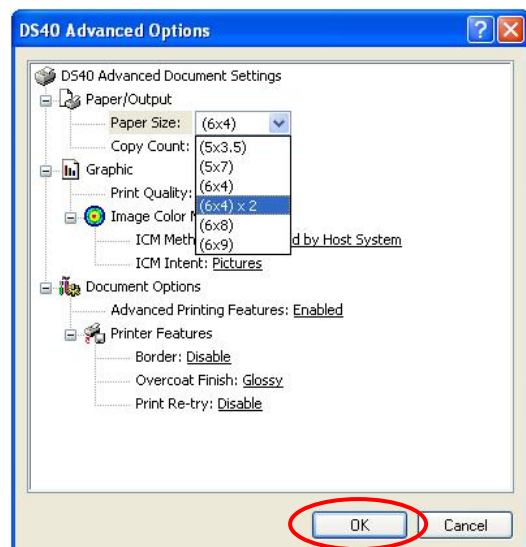
Step 4. After selecting the printer, open "Properties".



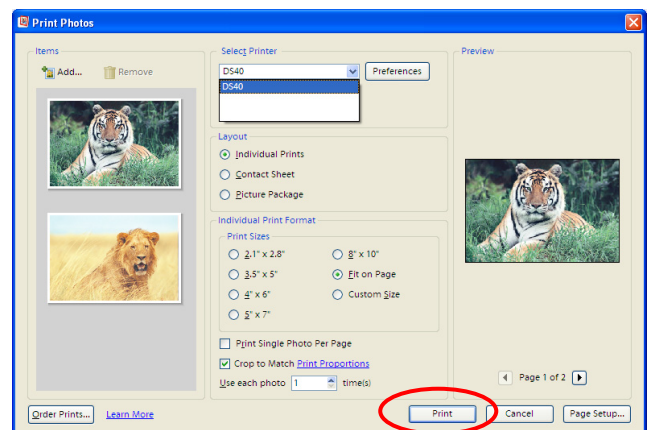
Step 5. Click on "Advanced".



Step 6. Set the Paper Size to "(6x4)x2". Then click "OK" on the windows from steps 6⇒5⇒4⇒3, returning to the window displayed in Step 2.



Step 7. Click on "Print".



2.2.3 Paper/Quality

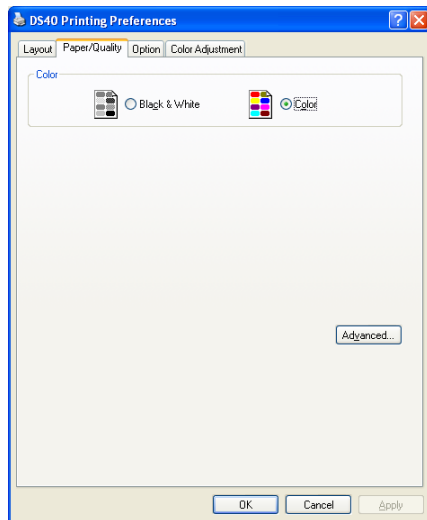


Fig 2.2.3 Paper/Quality tab

Color Please set to color print. Do not use for black and white printing.

2.2.4 Option

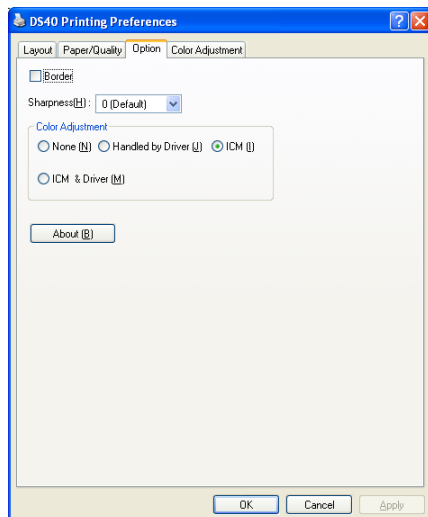


Fig 2.2.4.1 Paper option tab

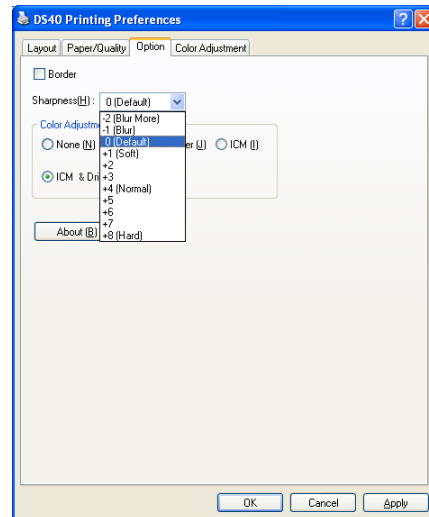


Fig 2.2.4.2 Sharpness setting

Border

Designates yes or no for border (check means with border). Synchronous with Border in the Advanced Settings.

Sharpness

Processes for 11 sharpness levels (Fig 2.2.4.2). 0(Initial setting) means there is no sharpness processing. Minus(-) blurs the image, and plus(+) increases the sharpness.

Color Adjustment

None

Synchronous with the ICM Method in the Advanced Settings. Checking this item disables ICM and the Color Adjustment tab, and color management does not occur from the driver.

Handled by Driver

Checking this item disables ICM and [2.2.5 Color Adjustment](#) is enabled. The adjustment values for gamma, brightness, contrast, and chroma are shown.

ICM

Synchronous with the ICM Method in the Advanced Settings (ICM Handled by Host System). Checking this item enables color management from the driver.

ICM & Driver

If you check this, ICM (color management) and color adjustment will be enabled.

About

Displays the driver version.

2.2.5 Color Adjustment

If you check **Handled by Driver** in [2.2.4 Option](#), the respective color adjustment values in the **Color Adjustment** tab are reflected in the image.

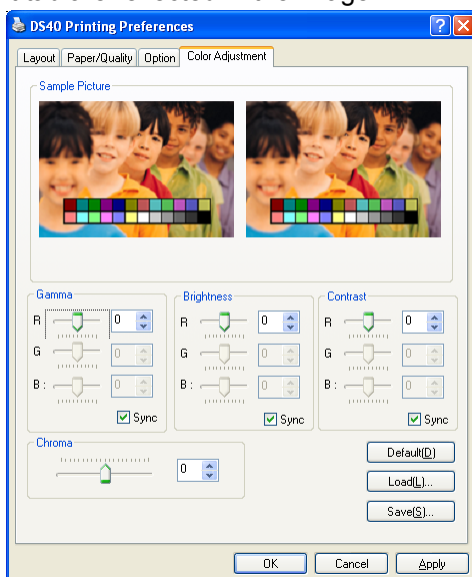


Fig 2.2.5 Color Adjustment tab

Setting ranges in the Color Adjustment tab are as follows:

Adjustment Item	Adjustment Value
Gamma	-100(dark) ~ 100(light) (0 means no adjustment, Gamma 2.0 ~ 0.5) Adjusts the density of the highlights in the image. The greater the gamma value, the brighter the highlights. Synchronous check box ON : Sets RGB at the same value OFF:Sets RGB at a different value
Brightness	-100(dark) ~ 100(light) (0 means no adjustment) Adjusts the brightness of the image. The larger the value, the greater the overall brightness of the image. Synchronous check box ON :Sets RGB at the same value OFF:Sets RGB at a different value
Contrast	-100(weak) ~ 100(strong) (0 means no adjustment) Adjusts the contrast of the image. The larger the value, the greater the contrast. Synchronous check box ON : Sets RGB at the same value OFF: Sets RGB at a different value
Chroma	-100(weak) ~ 100(strong) (0 means no adjustment) Adjusts the color saturation of the image.

2.3 Default Values for Various Settings

Default values for each option (at the time of installation) are shown below. If the printer driver does not work correctly after changing the options, please return the options to the default settings.

Note) According to the Service Pack and use environment of OS, the default value at the time of installation may differ from the following chart.

Tab	Options			Default
Layout	Orientation			Portrait
	Page Order			Front to Back
	Pages Per Sheet			1
Paper/Quality	Color			Color
Option	Frame			Disable
	Sharpness			0 (Default)
	Color Adjustment			ICM
Color Adjustment	Gamma			0
	Brightness			0
	Contrast			0
	Chroma			0
Advanced (Click [Advanced] button of Layout tab)	Paper/Output	Paper Size		DS40 (6 x 4) DS80 (8x10)
		Copy Count		1
	Graphic	Print Quality		300 x 300dpi
		Image Color Management	ICM Method	ICM Handled by Host System
			ICM Intent	Pictures
	Document Option	Advanced Printing Features		Enable
		Printer Features	Border	Disable
			Overcoat Finish	Glossy
			Print Re-try	Disable

Chart 2.3 Print Setting Default Values

2.4 Color Management

In [Color Management], this designates the color profile. Default at installation associates [DS40xxxx]. xxxx is a 4-digit number that refers to the version.

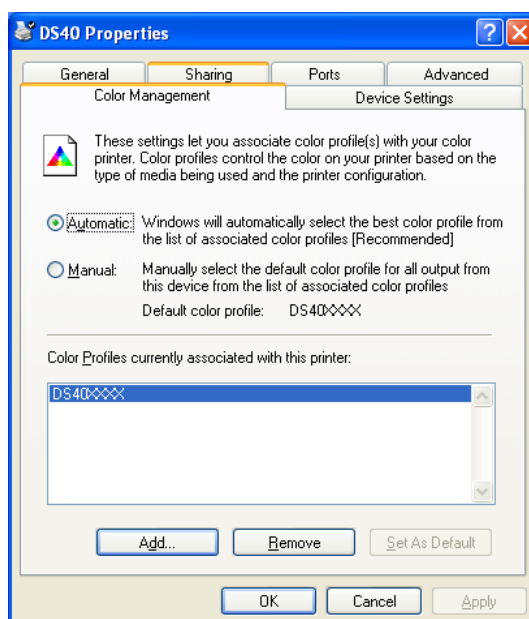


Fig 2.4 Color Management

2.5 Print Area

Depending on the paper size designated at the driver, the image size and dot count will be as follows.

Model	Paper	Size (inch)	Print Area (mm)	300 x 300 DPI Dot amount	300 x 600 DPI Dot amount
DS40 / DS80 (*)	(5x3.5)	3.5" x 5"	92.1 x 131.1	1088 x 1548	2176 x 1548
	(6x4)	4" x 6"	105.0 x 156.1	1240 x 1844	2480 x 1844
	(5x7)	5" x 7"	131.1 x 181.0	1548 x 2138	1548 x 4276
	(6x8)	6" x 8"	156.1 x 206.2	1844 x 2436	1844 x 4872
	(6x9)	6" x 9"	156.1 x 232.0	1844 x 2740	1844 x 5480
DS80	(8x4)	8" x 4"	207.3 x 104.6	2448 x 1236	2448 x 2472
	(8x5)	8" x 5"	207.3 x 130.0	2448 x 1536	2448 x 3072
	(8x6)	8" x 6"	207.3 x 155.4	2448 x 1836	2448 x 3672
	(8x8)	8" x 8"	207.3 x 206.0	2448 x 2436	2448 x 4872
	(8x10)	8" x 10"	207.3 x 257.0	2448 x 3036	2448 x 6072
	A4 Length	8" x 11.7"	207.3 x 297.0	2448 x 3544	2448 x 7088
	(8x12)	8" x 12"	207.3 x 307.8	2448 x 3636	2448 x 7272

With the DS80 printer, the paper size (output size) can be designated as less than 8 inches, but the media used will be the DS80 8 inch width media.

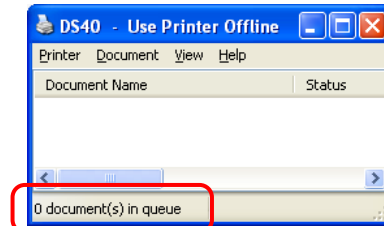
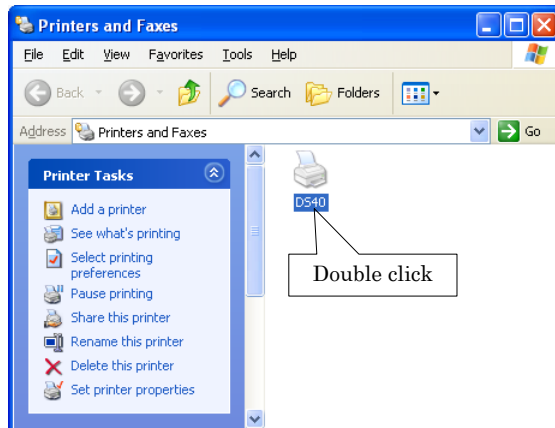
Chapter 3 Updating the Driver

In order to update the printer-driver, follow the steps shown below.

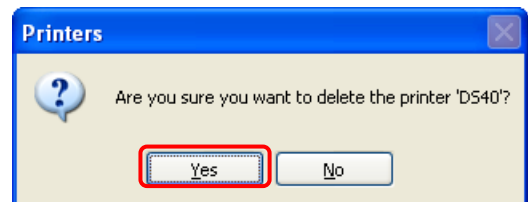
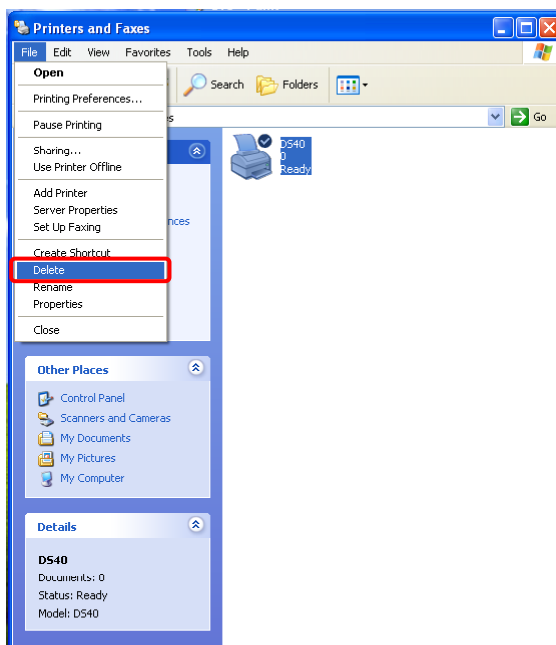
Updating the driver is the same for both the “DS40” and the “DS80”. The following instructions are for the “DS40”, but if you are using the “DS80”, just read it as “DS80”.

1. Driver Removal

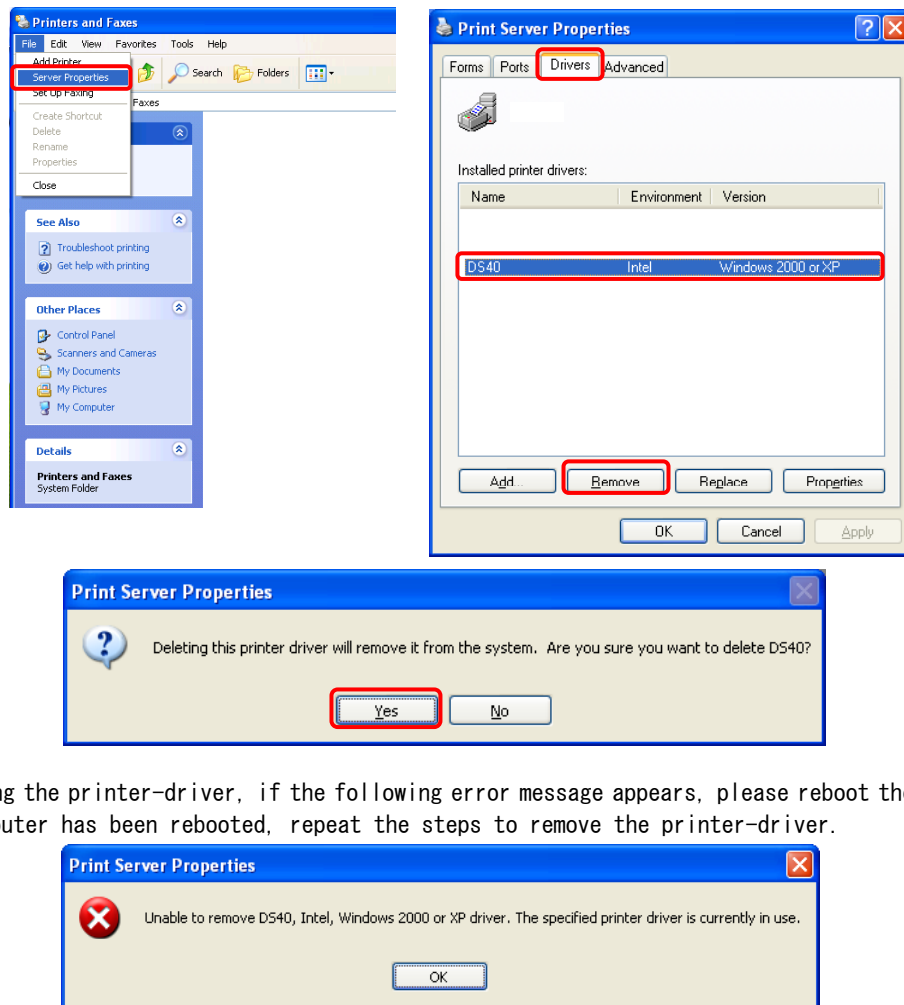
- (1) Before removing the printer-driver, shut down all other applications. Also, double click the icon for the printer to be removed, and make sure there are no documents in the queue before you begin removal of the driver.



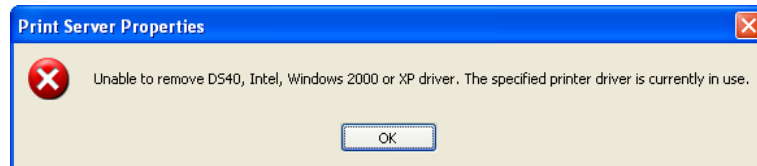
- (2) From the [Printers and Faxes] window, select the DS40 printer. Select [Delete this printer]. Are you sure you want to delete the printer “DS40” ? → select ” Yes” to remove the printer.



- (3) After the DS40 printer has been removed, in the same way select File → Server Properties. The Print Server Properties dialog box should appear. Select the Drivers tab. After selecting driver “DS40”, click “Remove”. The confirmation box will appear. By clicking “Yes”, the driver will be removed. After removal, reboot the computer.

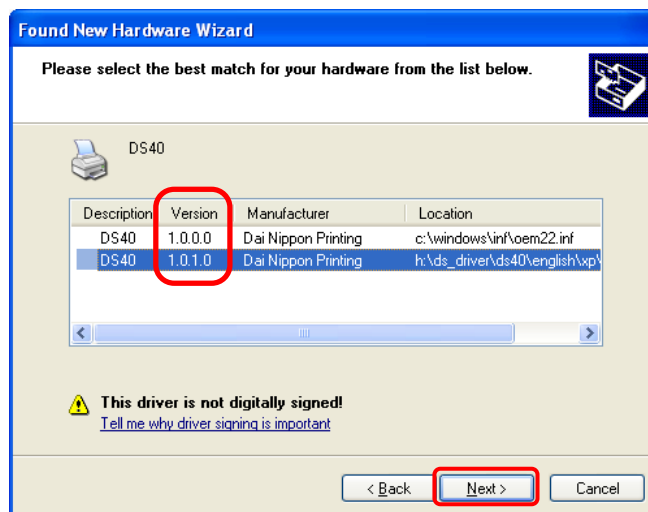


Note) Before removing the printer-driver, if the following error message appears, please reboot the computer. After the computer has been rebooted, repeat the steps to remove the printer-driver.



2. Installing the printer-driver upgrade

After removing the printer and printer-driver, install the new printer-driver. For installation steps, please refer to Chapter 1 “Install”. If the following window appears during installation, check the “Version” section, select the newest version, and click the “Next” button.



3. Rebooting the computer

After installation of the printer-driver is complete, be sure to reboot the computer. (Do not print immediately after installation. First reboot the computer.)

Chapter 4 Driver Removal

For steps to remove the printer-driver, refer to Chapter3 “1.Driver Removal” .