


## Update tool for DS-RX1 Firmware Ver. 2.10

### Firmware Update Procedure

July 29, 2021

Dai Nippon Printing Co., Ltd.

 While updating, do not disconnect the USB cable or turn the power off. Do not perform any operations such that could result in an error, such as opening the printer cover. Also, do not start or run other software at the same time.

This is an explanation for the DS-RX1 Version Up Tool, to update the printer's firmware Ver. 2.10.

This update tool can be used for the following OS.

Windows XP (32bit),	Windows Vista (32bit),	Windows 7 (32bit/64bit)
Windows 8 (32bit/64bit),	Windows 8.1 (32bit/64bit),	Windows 10 (32bit/64bit)

#### 1. Running DS-RX1 Version Up Tool


To begin with, turn on the printer and connect it to the host computer with the USB cable. Close the printer cover, and make sure it is idle, paper end, or ribbon end.

Run the DS-RX1 Version Up Tool execute file (DS-RX1\_0210x86\_Direct.exe) for 32bit OS.

Or,

Run the DS-RX1 Version Up Tool execute file (DS-RX1\_0210x64\_Direct.exe) for 64bit OS.

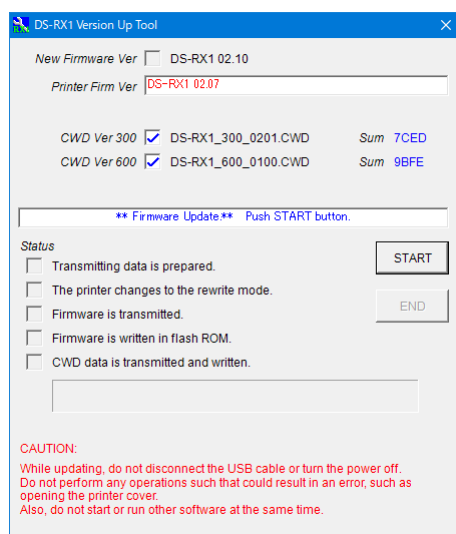
 If the error window is displayed, see Appendix A-1 or A-2.

 If the Printer setting window is displayed, see Appendix A-3.

A confirmation screen that allows you to run this software may appear. In that case, please allow it.

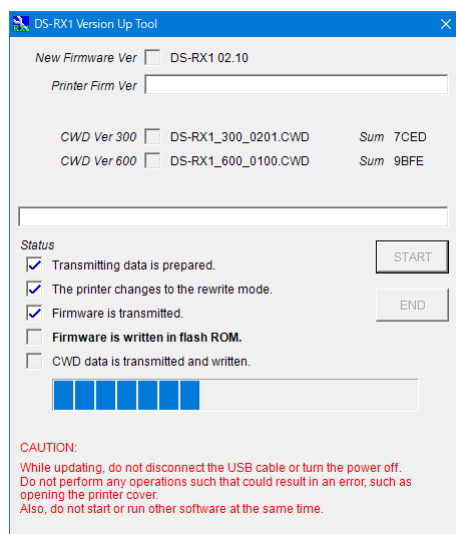
## 2 Starting the Update

On the DS-RX1 Version Up Tool window, click the “START” button to begin the update.



**IF** If the DS-RX1 occurs any error, the error message is displayed. See Appendix A-4.

When you click “START” and start the update, the window display will change to the following, and you can check the update progress status.



### **! Notice !**

While updating, do not disconnect the USB cable or turn the power off.  
Do not perform any operations such that could result in an error, such as opening the printer cover.  
Also, do not start or run other software at the same time.

When the printer enters the rewrite mode, the LED will change from green to flashing green.  
(The printer buzzer sounds during the update, but it is normal status.)

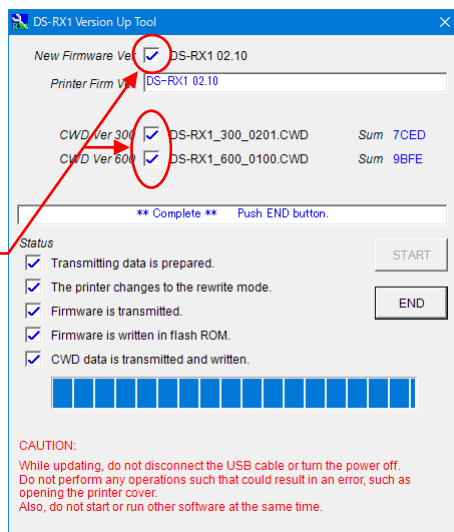
### 3. Finishing the update

When all the updates are complete, the window display will look like the following.

Also, the printer LED will revert from flashing green to green.

Confirm the New Firmware and New CWD Ver boxes are checked, and click the “END” button or close the window to end DS-RX1 Version Up Tool.

Confirmation



When all the updates are completed, reboot the host computer.

When the host computer is not rebooted, the new function might not be able to be used.

⚠ The copyrights for this document are the property of the holders of rights.

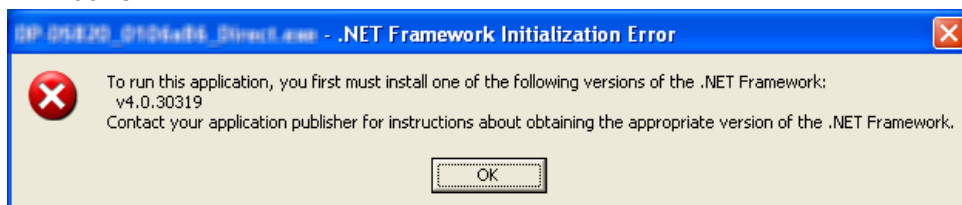
⚠ The contents of this document may be changed without prior notice.

Note: Windows is a trademark or registered trademark of Microsoft Corporation in the U.S. and/or other countries.

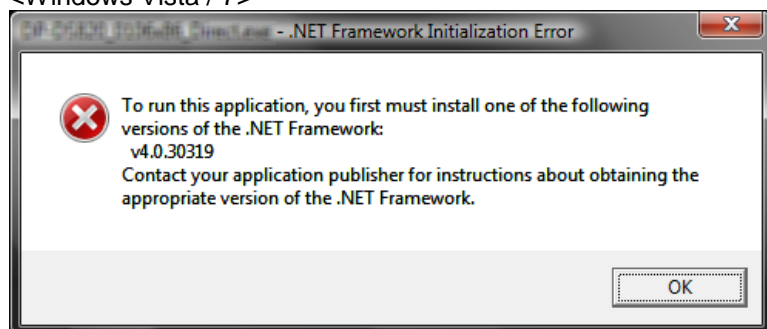
## Appendix A

1. If .NET Framework is not installed in the host computer, error messages are displayed.  
For supporting 32/64bit OS, this Version Up Tool is an application which use .NET Framework. When the start of this tool by XP/Vista/7 and the following message are displayed, it is necessary to install Microsoft .NET Framework. (In Windows 8 and later, the .NET Framework is installed by the standard.)

<Windows XP>



<Windows Vista / 7>

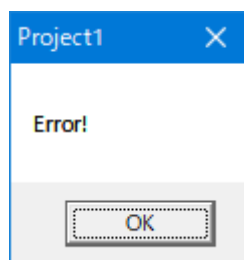


.NET Framework can be downloaded from following URL. The version that can be used is different depending on each OS. Details are described in URL. (This URL is a thing as of July 2021)

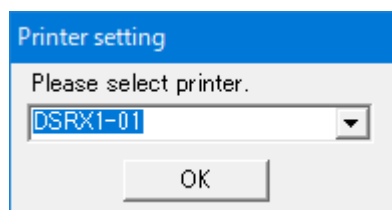
.NET Framework 4 download (Windows XP and later)

<https://www.microsoft.com/en-us/download/confirmation.aspx?id=17718> (English)

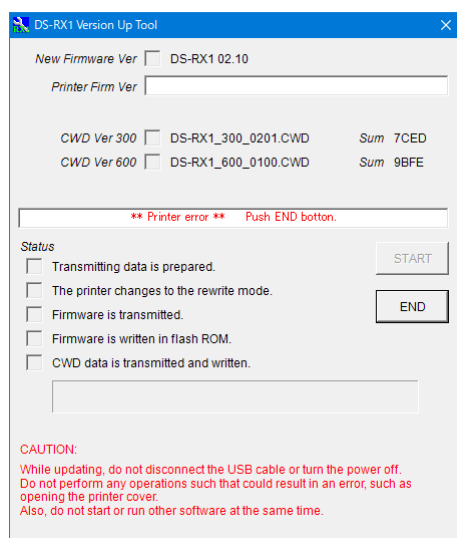
2. If there are no printer ports, the following confirmation window will open.  
After checking that power is on and the USB is connected, click "OK" to start the process again.



3. When running DS-RX1 Version Up Tool, if there are multiple printer ports, the following printer select window will open.  
Select the DS-RX1, and click “OK”.  
When updating multiple DS-RX1 units, execute them one by one.



4. When starting the update, if the printer status is anything other than idle, paper end, or ribbon end, the following printer error will be displayed. The same error will be shown if the USB cable is disconnected or the printer power is off.



If there is an error, click “END” or close the window to stop DS-RX1 Version Up Tool, be sure it is idle, paper end, or ribbon end, and run DS-RX1 Version Up Tool again.  
If the USB cable was disconnected or the power was off, check that the USB cable is connected and the power is turned on.

## Appendix B

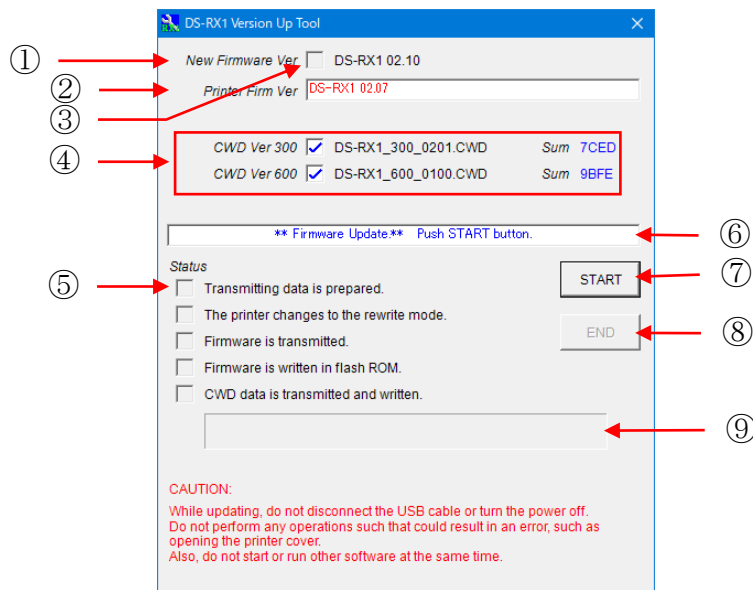
### 1. DS-RX1 Version Up Tool Execute File Names

The DS-RX1 Version Up Tool has a specific execute file for each version to be updated.

The execute file names provided with the DS-RX1 Version Up Tool this time, and their corresponding update firmware and color control data versions are shown below.

	For 32bit OS	For 64bit OS
DS-RX1 Version Up Tool Execute File Name	DS-RX1_0210x86_Direct.exe	DS-RX1_0210x64_Direct.exe
Firmware Version	DS-RX1 02.10	
Color Control Data Version and Checksum	DS-RX1_300_0201.CWD 7CED DS-RX1_600_0100.CWD 9BFE	

## DS-RX1 Version Up Tool Window Explanation



## DS-RX1 Version Up Tool Window

- |                              |   |
|------------------------------|---|
| ① New Firmware               | This displays the new firmware version that will be used in the update.   |
| ② Printer Firm Ver           | This displays the printer's current firmware version.<br>If it differs from the new version, it will be displayed with red letters.   |
| ③ Check Box                  | This box will have a check if the new firmware or color control data has already been written to the printer, or if the update has been completed.  |
| ④ CWD Ver 300<br>CWD Ver 600 | This displays the new color control data version and checksum value (Sum) to be updated.<br>When the update is complete, the Sum value will be displayed in blue.<br><br><div style="margin-left: 40px;"> CWD Ver 300 : CWD for 300dpi<br/> CWD Ver 600 : CWD for 600dpi </div> |
| ⑤ Status                     | This checks the progress status for the update.   |
| ⑥ Indicator                  | This shows the printer's current status, and the application operating command.   |
| ⑦ START                      | Update start button<br>Clicking this button starts the update.  |
| ⑧ END                        | End the update. (Disabled during updating)  |
| ⑨ Status Bar                 | Displays the progress status for the update.  |